

# **ST20XX SIP New Features (SG vx.68.5)**

## Contents

1	Overview.....	3
2	Hua Wei SoftSwitch.....	3
2.1	Feature Activation .....	6
A.	Via APS .....	6
B.	Via Telnet .....	6
3	Config without reload.....	7
4	CCBS Enable/Disable .....	9
C.	Via APS .....	9
D.	Via Telnet .....	9

## 1 Overview

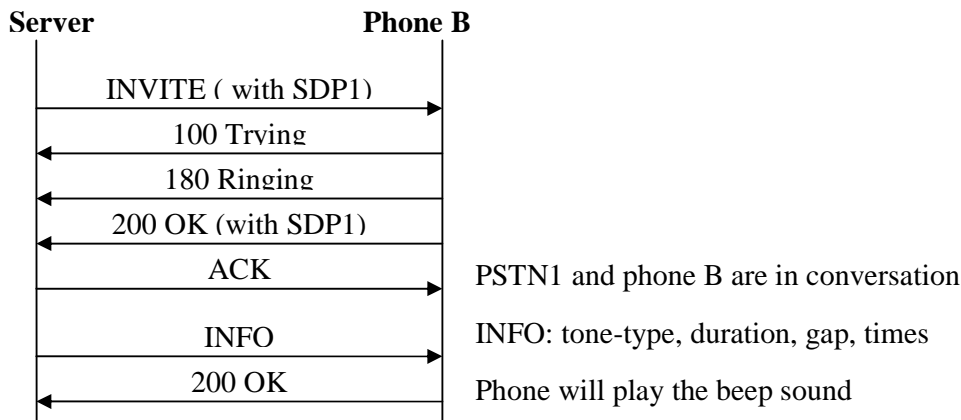
This document describes a set of new features included in ST2030 and S2022 SIP V2.68.5 and 4.68.5 respectively in order to improve their usability in different environments.

## 2 Hua Wei SoftSwitch

Starting with this new release, ST20xx have implement Softswitch (Hua Wei SoftX3000 V300R006) PSTN call handling including call waiting and switching.

### Flow descriptions:

Below is to list out a flow which shows PSTN 1 call to IP phone B in conversation, then PSTN 2 call to IP phone B.



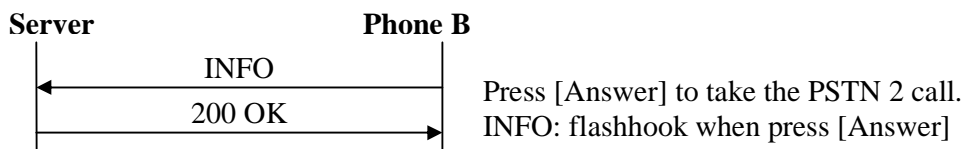
[Answer] and [Reject] softkey displays on the screen.

ST2030s (Phone B)

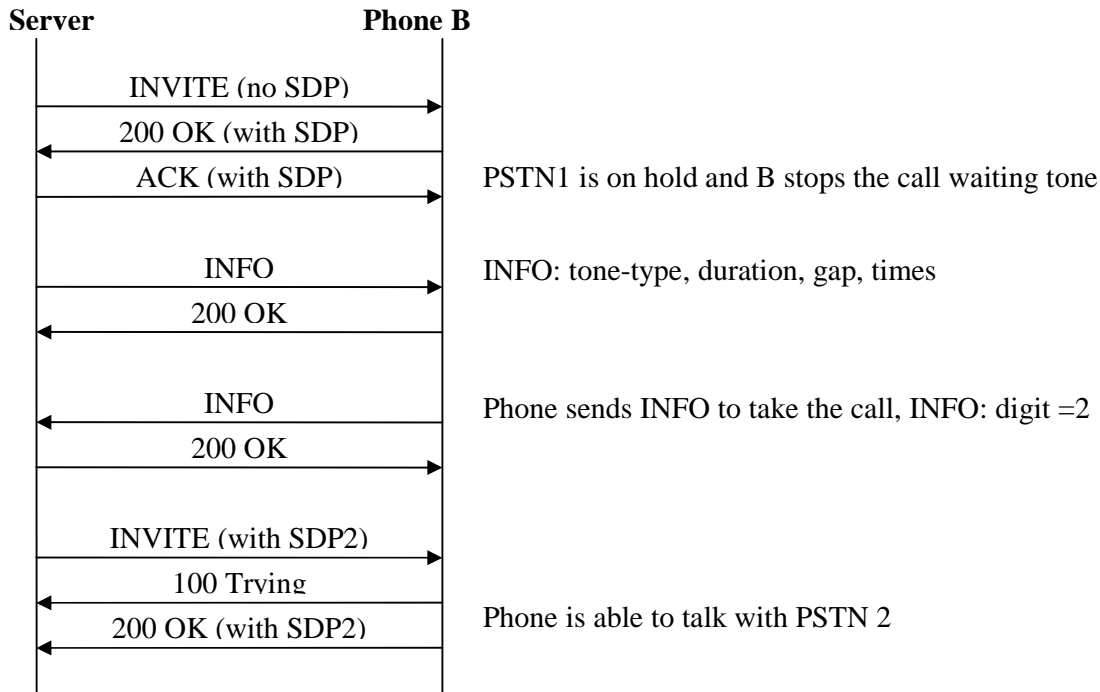
Date	Hour	Icons
01	PSTN Call	
Answer	Reject	

ST2022s (Phone B)

01
Answer Reject



**Remark:** Go back to previous screen when [Reject] is pressed.



ST2030s (Phone B)

Date	Hour	Icons
01 PSTN Call/phone number		
Taking	Duration	
Hold	Switch	Conf

ST2022s (Phone B)

01 PSTN Call/phone number		
Talking	Duration	
Hold	Switch	Conf

**Remark:** Pressing **[Hold]**, **[Conf]** and **[Transfer]** will keep the same as current implementation.

## Switch implementation

### Requirement

- **[Switch]** softkey is required to caller parties to switch between caller during conversation

Below is to list out a flow which shows IP Phone B call to IP phone A in conversation, then PSTN 1 call to IP phone B. B and PSTN 1 are in conversation. Phone B presses **[Switch]** back to phone A and start conversation.

### Flow descriptions:

Phone A ↔ Phone B, operate in normal SIP protocol

PSTN 1 → phone B, call waiting tone is played, same as the call waiting flow above → call activated

Phone B presses **[Switch]** to talk back with phone A

**(PSTN 1 and Phone B are in conversation)**

ST2030s (Phone B)

Date	Hour	Icons
01 PSTN Call/phone number		
Taking		Duration
<b>Hold</b>	<b>Switch</b>	<b>Conf</b>

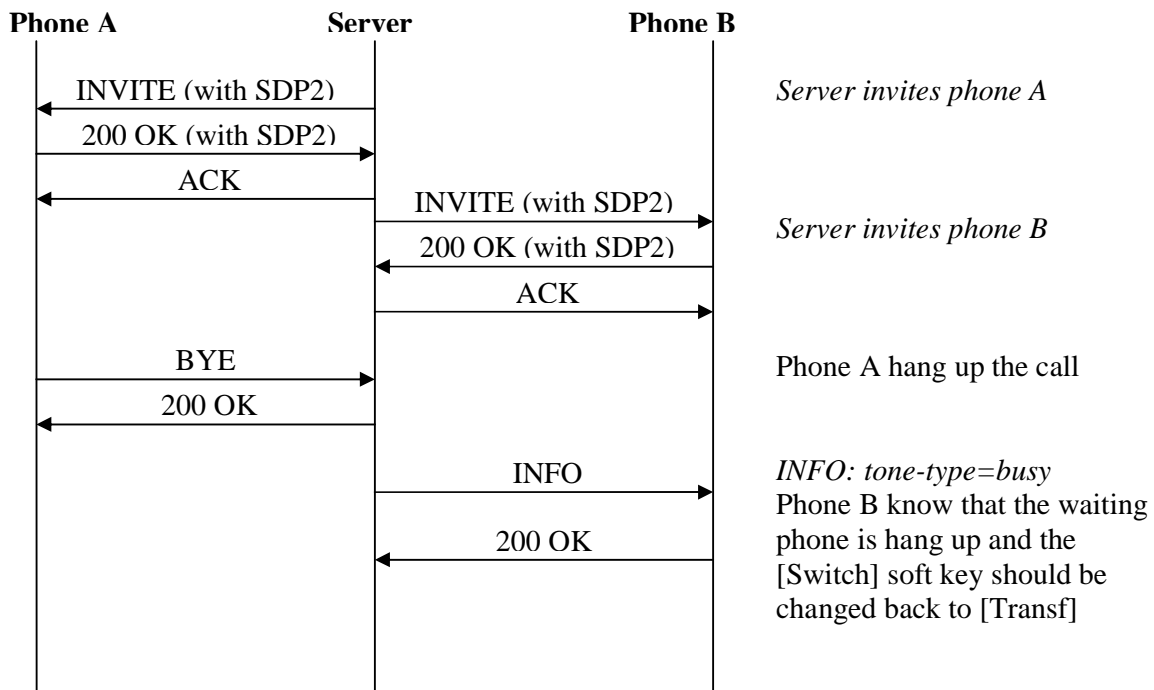
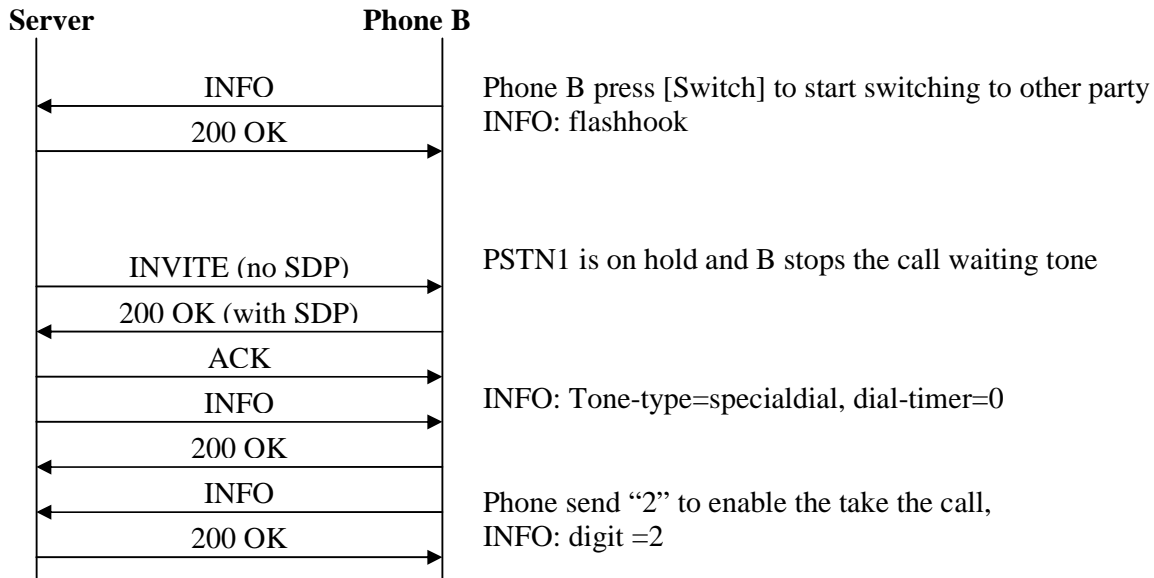
Transf >

ST2022s (Phone B)

01 PSTN Call/phone number		
Talking		Duration
<b>Hold</b>	<b>Switch</b>	<b>Conf</b>

Transf >

When [**Switch**] is pressed, switching is processed.



ST2030s (Phone B)

Date	Hour	Icons
01 PSTN Call/phone number		
Taking		Duration
Hold	Transf	Conf

ST2022s (Phone B)

01 PSTN Call/phone number		
Talking		Duration
Hold	Transf	Conf

## 2.1 Feature Activation

### A. Via APS

APS in [sys] section of both Common and Specific-MAC config files with the new parameter – **MGC\_service**.

**MGC\_service = 0** disable (default)

**MGC\_service = 1** Hua Wei Softswitch PSTN handling

```
[sys]
...
MGC_service=0                // Disable (default)
...
```

### B. Via Telnet

To configure, open a command line console, and telnet the phone:

#### Example:

1. MGC\_service is set to disable (**sys set mgc\_service 0**)

```
[administrator]# sys set mgc_service 0
[OK] Set OK

[administrator]#
```

2. MGC\_service is set to Hua Wei Softswitch PSTN handling (**sys set mgc\_service 1**)

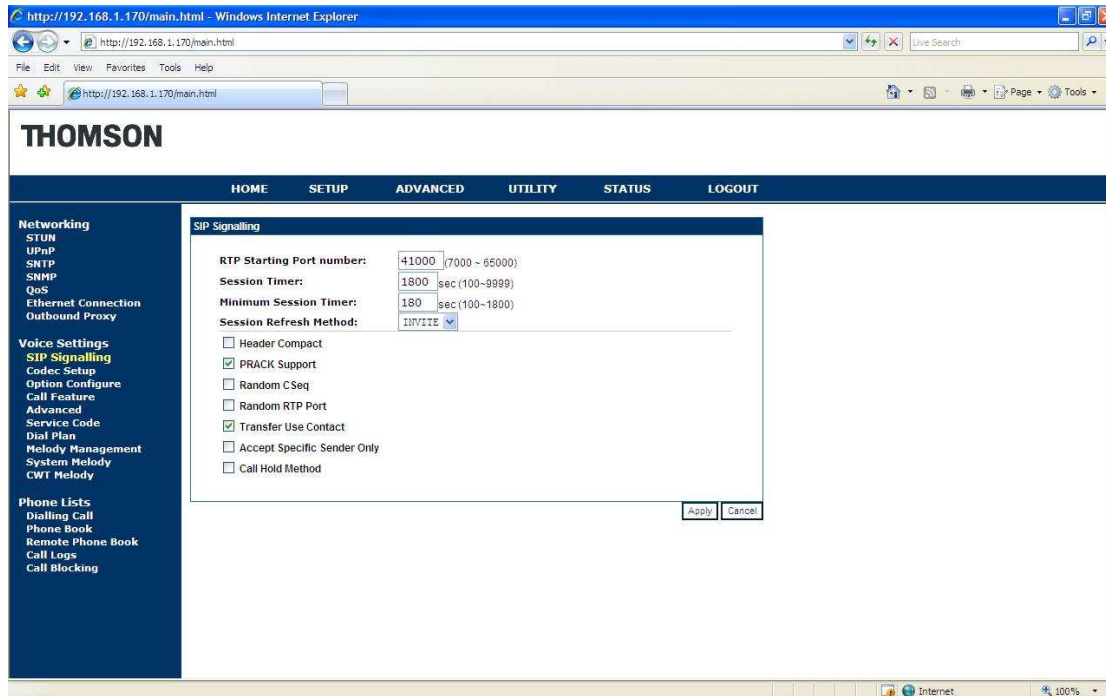
```
[administrator]# sys set mgc_service 1
[OK] Set OK

[administrator]#
```

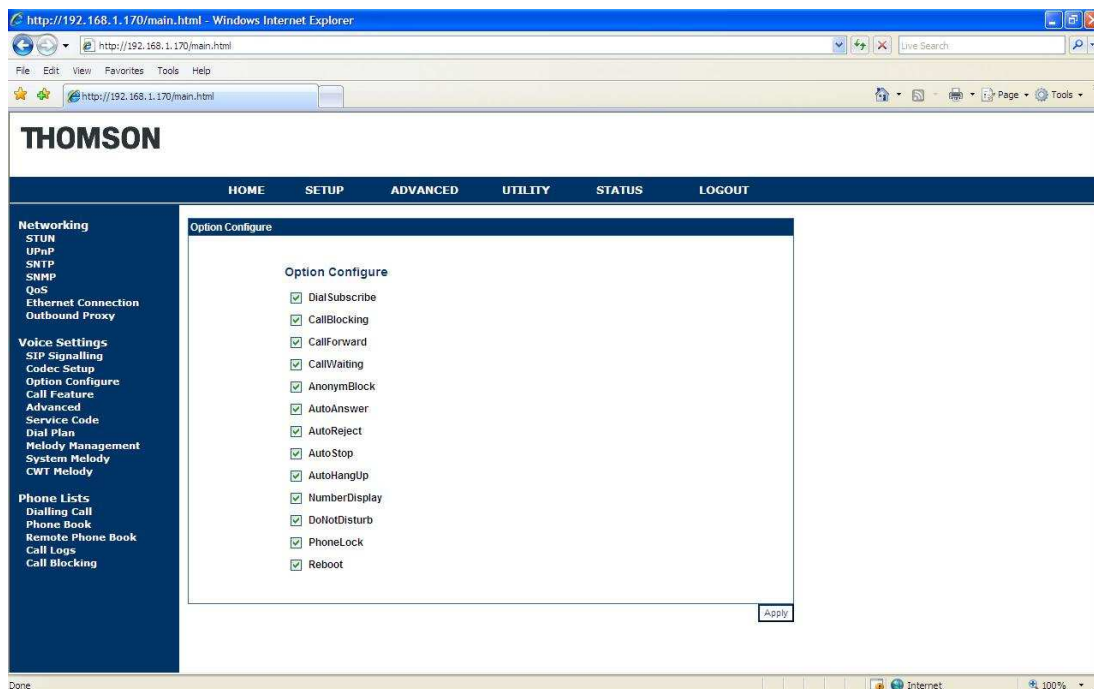
Then type **commit** and then **activate** to apply the change.

### 3 Config without reload

Starting from this version changing config/setting in SIP Signalling, Option Configure, Call feature and Advanced Web page, ST20XX do not need to reboot.



Except “RTP Starting Port Number” and “Minimum Session Timer”, all parameter changed in SIP Signalling page are configured without reload.



All parameters changed in Option Configure page are configured without reload.

Except “ACD”, “Shared Call Appearance”, “Conference Mode”, “Start Spare FK” and “BLF Type”, all parameters changed in Call Features page are configured without reload.

Apart from “Use Secure outgoing calls if possible”, “Silence Suppression”, “Acoustic Echo Cancellation (AEC)”, “Packet Loss Compensation”, all parameters changed in Advance page are configured without reload.



## 4 CCBS Enable/Disable

A new parameter is added for CallBack feature. This parameter is configurable in common config file and telnet.

**auto\_cb = 0/1**

**// 1: Enable CallBack feature**

Date	Hour	Icons
Remote Unavailable!		
XXXXXXXXXX		
<b>CBBack</b>		<b>Back</b>

**// 0: Disable CallBack feature**

Date	Hour	Icons
Remote Unavailable!		
XXXXXXXXXX		
		<b>Back</b>

The default value is 1.

### C. Via APS

APS in [ipp] section of both Common and Specific-MAC config files with the new parameter – **auto\_cb**.

```
[ipp]
...
auto_cb=1                      // Enable (default)
...
```

### D. Via Telnet

To configure, open a command line console, and telnet the phone:

#### Example:

1. Auto\_cb is set to enable (**lcdui set auto\_cb 1**)

```
[administrator]# lcdui set auto_cb 1
LcdUi Set Command OK!

[administrator]#
```

2. Auto\_cb is set to disable. (**lcdui set auto\_cb 0**)

```
[administrator]# lcdui set auto_cb 0
LcdUi Set Command OK!

[administrator]#
```

Then type **commit** and then **activate** to apply the change.

End of document